

BIOFIRE® FILMARRAY® Gastrointestinal (GI) Panel Mid Quick Guide

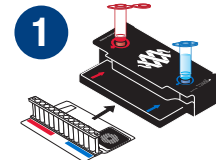
IVD Rx Only **REF** 424898
425089



⚠ To avoid contamination, always wear clean gloves and work behind a protective shield.

STEP 1: PREPARE POUCH

- Insert pouch into BIOFIRE® Pouch Loading Station.
- Place **Sample Injection Vial** into **red well**.
- Place **Hydration Injection Vial** into **blue well**.



STEP 2: HYDRATE POUCH

- Unscrew **Hydration Injection Vial** from cap.
- Remove **Hydration Injection Vial**, leaving cap in Pouch Loading Station.
- Insert **Hydration Injection Vial** into **pouch hydration port**.
- Push down to puncture seal then wait as **Hydration Solution** is drawn into pouch.

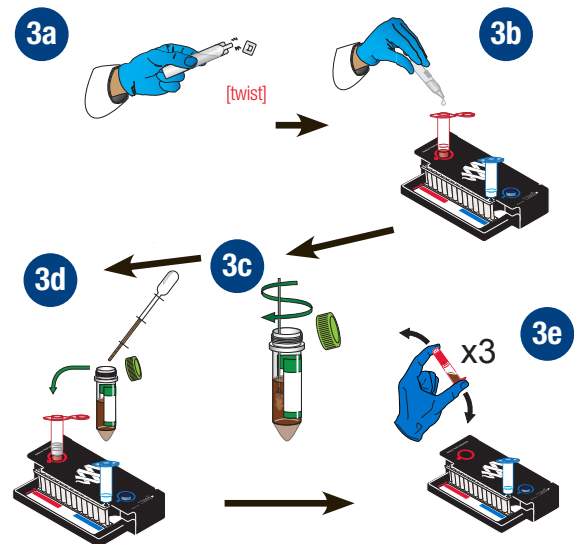
Note - verify the pouch has been hydrated.



STEP 3: PREPARE SAMPLE MIX

- Hold Sample Buffer Ampoule tip facing up and twist plastic tab off of ampoule tip.
NOTE: Do not touch ampoule tip.
- Dispense Sample Buffer into **Sample Injection Vial** using a slow, forceful squeeze followed by a second squeeze. Avoid generating excessive foaming.
- Thoroughly mix stool specimen in transport media.
- Using the Transfer Pipette, draw specimen to the second line. Add specimen to **Sample Injection Vial** then tightly close lid.
- Invert the **Sample Injection Vial** 3 times then return to **red well** of Pouch Loading Station.

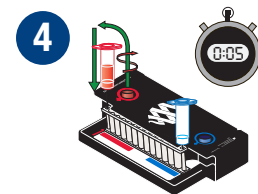
⚠ *Warning—The Sample Buffer is harmful if swallowed and can cause serious eye damage and/or skin irritation.*



STEP 4: LOAD SAMPLE MIX

- Unscrew **Sample Injection Vial** from cap.
- Wait 5 seconds, then remove **Sample Injection Vial**, leaving cap in Pouch Loading Station.
- Insert **Sample Injection Vial** into **pouch sample port**.
- Push down to puncture seal then wait as **Sample Mix** is drawn into pouch.

Note - Waiting 5 seconds decreases the contamination risk.



STEP 5: RUN POUCH

- Follow instructions on computer for initiating a test.

RUN SUMMARY

Displays information about the sample and a summary of the control and test results.

1. Detected:

- Names of any detected pathogens
- If 'None', no pathogens were detected
- If '⚠ Invalid', RETEST SAMPLE

2. Controls:

- If 'Passed', results are valid
- If '⚠ Failed', RETEST SAMPLE
- If '⚠ Invalid', RETEST SAMPLE

FilmArray® GI Panel Mid		BIOFIRE® BY BIODIVERSITY www.BioFireDx.com	
Run Summary			
Sample ID: Sample ID 3 ²		Run Date: 10 Sep 2024 2:36 PM	
1	Detected: Salmonella	2	Controls: Passed

RESULTS SUMMARY

Displays the test results for each organism.

3. If 'Detected', pathogen was detected

4. If 'Not Detected', pathogen was not detected

If '⚠ Invalid', RETEST SAMPLE

Note - If repeated 'Invalid' results are obtained, contact Customer Support, the local bioMérieux sales representative, or an authorized distributor.

Result Summary	
Bacteria	
Not Detected	Campylobacter (<i>C. jejuni</i> / <i>C. coli</i> / <i>C. upsaliensis</i>)
3 ✓ Detected	Salmonella
Not Detected	Shiga-like toxin-producing <i>E. coli</i> (STEC) <i>stx1/stx2</i>
Not Detected	Shigella/Enteroinvasive <i>E. coli</i> (EIEC)
Not Detected	<i>Vibrio</i> (<i>V. parahaemolyticus</i> / <i>V. vulnificus</i> / <i>V. cholerae</i>)
Not Detected	<i>Yersinia enterocolitica</i>
Parasites	
Not Detected	<i>Cryptosporidium</i>
Not Detected	<i>Cyclospora cayentanensis</i>
Not Detected	<i>Giardia lamblia</i>
Viruses	
Not Detected	Norovirus GI/GII

RUN DETAILS

Displays information about the pouch, instrument, run status, and operator.

5. Run Status:


- If 'Completed', run is complete
- If 'Incomplete', 'Aborted', or any other error message, RETEST SAMPLE

Run Details		
5	Pouch: GI Panel Mid v2.1	Protocol: Stool FA v3.4
	Run Status: Completed	Operator: Mandy Mieu (mm)
	Serial No.: SIM002	Instrument: FA2 DEFAULT Sim 1
	Lot No.: SIM000	

Note - If repeated 'Error' messages are obtained, contact Customer Support, the local bioMérieux sales representative, or an authorized distributor.

BFR0002-7234-01

© 2025 BioFire Diagnostics, LLC. All rights reserved.
Under the copyright laws, this quick guide may not be copied, in whole or in part, without the written consent of BioFire.

 BioFire Diagnostics, LLC
515 Colorow Drive
Salt Lake City, Utah 84108 USA
1-801-736-6354
www.biofiredx.com